

NEO™

*There is only one company
advancing the future of
transfusion medicine.*

From the company that
developed industry-leading
automation solutions, Galileo
and Echo, comes the next
revolution of blood banking...



NEO™

NEO'S modules operate independently and simultaneously, improving productivity for the high-volume laboratory.

- (a) WINDOWS-BASED USER-FRIENDLY TOUCHSCREEN INTERFACE
- (b) LINEAR RACK SAMPLE AND REAGENT BAY; LOAD UP TO 224 SAMPLES AT ONCE
- (c) DUAL PIPETTORS FOR PROCESSING MULTIPLE SAMPLES AND PLATES SIMULTANEOUSLY
- (d) MICROPLATE LOADING TOWER, WASHER MODULE, INCUBATOR MODULE, IMAGE ANALYSIS READER
- (e) CENTRIFUGE MODULE
- (f) FLUIDICS MODULE IS SELF-CONTAINED



PRODUCTIVITY

NEO delivers the **HIGHEST TYPE-AND-SCREEN THROUGHPUT** in the market. **TRUE CONTINUOUS ACCESS** allows operators to add samples or resources anytime.

PERFORMANCE

NEO automates Immucor's patented **CAPTURE®** technology with proven clinical performance and a **COMPREHENSIVE PROCESS CONTROL STRATEGY**, providing trustworthy test results.

FLEXIBILITY

NEO'S **DYNAMIC SCHEDULER**, with new **STAT PRIORITY** handling offers superior workflow management.

BROAD TEST MENU

- ABO/Rh Typing
- Weak D
- Rh Phenotyping
- Kell Phenotyping
- Donor Confirmation
- Antigen Screening
- Antibody Identification
(Primary Panel, D Pos Panel
D Neg Panel)
- Antibody Screening
(2-cell, 3-cell, & Pooled)
- IgG DAT
- IgG Crossmatch
- Platelet Antibody Screen*

STAT FUNCTIONALITY

NEO'S user-friendly interface provides access to test ordering and prioritization, resource management, and reporting with the touch of a fingertip.

The screenshot displays the Galileo software interface with several key components:

- Rack Area:** A visual representation of a 14-well rack with colored indicators for each well.
- Identifiers:** A list of samples with their IDs:

Sample	Identifier
1	Sample 6812
2	Sample 6755
3	Sample 6764
4	Sample 6797
5	Sample 6763
- Test Selection:** A panel with buttons for various tests. The 'STAT' button is highlighted with an orange box. Other tests include ABORH, Ag_CcEe, DAT, 2_Cell, 3_Cell, 4_Cell, Ab_ID, and Weak_D.
- Gantt Chart:** A timeline view showing the duration of multiple assays and samples, with bars representing the time taken for each.
- Results Grid:** A 12-well grid showing real-time results. The grid is labeled with columns 1-12 and rows A-H. The results are displayed as colored circles (red for positive, blue for negative) with a reaction strength of 94.

Text overlays on the image provide additional context:

- DESIGNATE ONE OR MULTIPLE SAMPLES AS STAT.** (Pointing to the STAT button)
- NEO'S DYNAMIC SCHEDULER PROVIDES EFFICIENT PROCESSING OF MULTIPLE SAMPLES AND ASSAYS, ALL PERFORMED SIMULTANEOUSLY.** (Pointing to the Gantt chart)
- REALTIME RESULTS CAN BE VIEWED BY IMAGE, INTERPRETATION, REACTION GRADE, OR SCORE.** (Pointing to the Results grid)

HISTORY OF INNOVATION

Introducing Immucor's **FOURTH-GENERATION**, fully-automated blood bank instrument. Designed for the high-volume laboratory, NEO brings new functionality to improve day-to-day efficiencies.

NEO offers improvements over Galileo:

- STAT PRIORITY FUNCTIONALITY
- MORE FLEXIBILITY IN RESOURCE HANDLING
- NEXT-GENERATION **PIPETTOR, WASHER, AND CENTRIFUGE LOADING UNIT.**



Dias

1998



Galileo (*678 placements worldwide)

2004



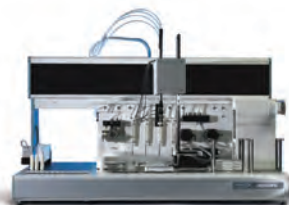
NEO

2010

ABS2000

Rosys

Echo (*720 placements worldwide)



*data referenced from 2009-11



To learn more or to set up a consultation with one of our Blood Bank Business Managers, call 800 829 2553 or visit www.immucor.com.

3130 Gateway Drive (30071) P.O. Box 5625
Norcross, GA 30091-5625
T: 800 829 2553 T: 770 441 2051 F: 770 441 3807